

2019

Q4

# Quarterly Report Part 2

NOVEMBER  
~  
DECEMBER

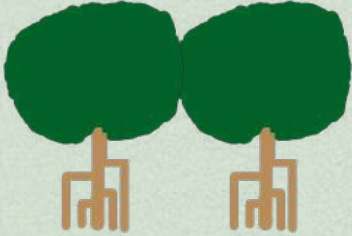


KNOWLEDGE  
INSIGHT PRO  
BRILLIANT LEVE  
INTELLIGEN

Pengenalan kepada  
TAPIR MALAYA

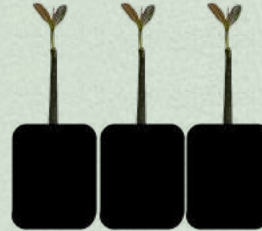


# SUMMARY



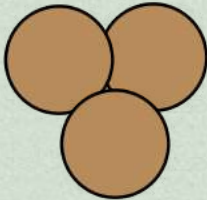
**5,649**

MANGROVE TREES  
PLANTED NATIONWIDE



**1,035**

MANGROVE SEEDS  
WERE PLANTED  
INTO POLYBAGS



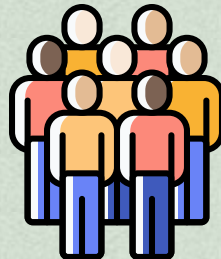
**200**

MUDBALLS  
WERE THROWN  
INTO RIVER



**138KG**

GARBAGE COLLECTED



**4,012**

WERE EXPOSED TO  
ENVIRONMENTAL  
EDUCATION &  
CONSERVATION

11

NOVEMBER

### **LIST OF ACRONYMS**

- KSNP** - Kuala Selangor Nature Park
- NEC** - MNS Nature Education Centre , FRIM, Kepong
- ECOCARE** - MNS Education Centre In Kertih
- SRR** - Sahabat Raja Rimba ( MNS Local Community)
- UEEH** - MNS Urban Environmental Education Hub, Midvalley
- KPA** - Kelab Pencinta Alam





# YOUNG NATURALIST CAMP WITH GEC GROUP @NEC



**40**  
**PAX JOINED  
THE PROGRAM**



**3D2N**  
**PROGRAM**

November 3



# **PETRONAS GAS SDN BHD MANGROVE TREE PLANTING @SUNGAI LATOH, JOHOR**



**250**  
**PAX JOINED  
THE PROGRAM**

**450**  
**MANGROVE TREES  
PLANTED**

**180**  
**MANGROVE  
SEEDS PLANTED  
INTO POLYBAGS**



November 4



# PETRONAS CHEMICALS AMMONIA S/B MANGROVE TREE PLANTING @ECOCARE

**60**

**PAX JOINED  
THE PROGRAM**



**51**

**MANGROVE TREES  
PLANTED**

**102**

**MANGROVE  
SEEDS PLANTED  
INTO POLYBAGS**



# CAPTAIN PLANET CAMP WITH SJKT LADANG MIDLANDS @NEC



**47**

**PAX JOINED  
THE PROGRAM**

**2D1N**

**PROGRAM**





# MNS MYFOREST WATCH WITH BFM 89.9





November 11

# MNS ORGANIZED ULU MUDA SEMINAR, @ ALOR SETAR, KEDAH



**300**

**PAX JOINED  
THE PROGRAM**

**1**

**DAY  
EVANT**



# SIRI MODUL HIDUPAN LIAR PAK CIPAN: TAPIR MALAYA



**200**  
PAX JOINED  
THE PROGRAM

**6**  
SCHOOLS  
INVOLVED





# SMK CENDRAWASIH, KUANTAN & ECRO VISITED ECO CARE



**60**

**PAX JOINED  
THE PROGRAM**

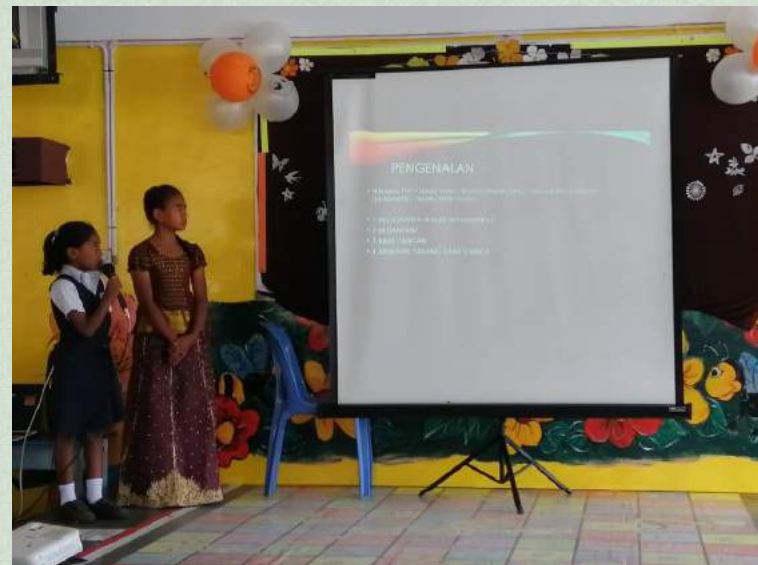
**1/2**

**DAY  
EVENT**



# MNS ORGANIZED SCIENCE CARNIVAL SCHOOL NATURE CLUB, @ CAMERON HIGHLAND

A PROGRAM SPONSORED BY BOH PLANTIONS SDN BHD



**120**  
PAX JOINED  
THE PROGRAM

**1**  
DAY  
EVANT





# **MNS ATTENDED HUMAN-WILDLIFE CONFLICT WORKSHOP @ TAWAU**

**A PROGRAM ORGANIZED BY MPOC**





# UMT MARINE SCIENCE STUDENT FIELD TRIP @ECOCARE



**91**

**PAX JOINED  
THE PROGRAM**

**2D1N**

**PROGRAM**





## MNS MET BETTA BEACON



Education and conservation awareness of the original Malaysian Betta fish and not the hybrids by the BEACON group. Fish Community formation possibility. The group left us two Betta.



# URBAN OTTER SURVEY @ KEPONG METROPOLITAN PARK



- To survey the presence of otter in the park based on recent news published by Malay Mail on the sightings of otters in the park from the public;
- To document the potential threats on the otters in the park;



November 16



# IMPLEMENTATION OF CLEAN COSTAL INDEX (CCI) METHOD IN ORDER TO RECORD PLASTIC WASTE COLLECTED AT BAGAN LALANG BEACH

A PROGRAM SPONSORED BY  
IOI PROPERTIES GROUP

**60**

**PAX JOINED  
THE PROGRAM**

**1/2**

**DAY  
PROGRAM**



# **MNS VISITED PIASAU NATURE RESERVE, SARAWAK TO TALK ABOUT MYFOREST PROJECT**







# PROGRAM LAWATAN SAMBIL BELAJAR KELAB PENCINTA ALAM MELAKA 2019



**41**

**PAX JOINED  
THE PROGRAM**

**2**

**SCHOOLS FROM  
MELAKA**

November 18



# **MNS ATTENDED KUMPULAN PENGURUSAN KAYU KAYAN TERENGGANU STAKEHOLDER CONSULTATION WORKSHOP @ K. TERENGGANU**







# SMK DURIAN MAS MANGROVE GUIDED TOUR @ ECO CARE



**25**

**PAX JOINED  
THE PROGRAM**

**1/2**

**DAY  
PROGRAM**

November 19



# **MNS ATTENDED STAKEHOLDER CONSULTATION MEETING ON OTHER EFFECTIVE AREA-BASED CONSERVATION MEASURES (OECMS)**







# MNS ATTENDED SEVENTH REGIONAL TRAINING WORKSHOP ON TIMBER LEGALITY ASSURANCE (TLA-7), INDONESIA



November 20 - 22



# Junior Environmental Leaders Series Zero Single Use Plastic Camp @ NEC

A PROGRAM FUNDED BY TELEKOM MALAYSIA (TM)



**2D1N**

**PROGRAM**

**20**

**PAX JOINED  
THE PROGRAM**





# MNS ATTENDED AN ECOSYSTEM SERVICES COMMUNITY OF PRACTICE FORUM : LEARNING FROM SITE-BASED ECOSYSTEM IN MALAYSIA





# JUNIOR ENVIRONMENTAL LEADERS SERIES CONFERENCE @ FRIM KEPONG.

A PROGRAM SPONSORED BY TELEKOM MALAYSIA (TM)



**180**

**PAX JOINED  
THE PROGRAM**

**1**

**DAY  
EVENT**





# YOUNG NATURALIST CAMP @NEC



**28**

**PAX JOINED  
THE PROGRAM**

**3D2N**

**EVENT**



# MNS ORGANIZED TAPIR TALK @ RIMBA ILMU, UNIVERSITI MALAYA

**TAPIR TALKS**  
MNS Public Forum Series

**'Science Diplomacy: The Politics of Biodiversity Loss'**

With Malaysian Nature Society  
President Prof. Dr. Ahmad Ismail  
&  
Eminent Science Advisor and  
Merdeka Award winner  
Prof. Tan Sri Zakri Abdul Hamid

26 November 2019  
2pm-6pm  
Rimba Ilmu  
Universiti Malaya

STRENGTHENING NON-STATE ACTOR  
INVOLVEMENT IN FOREST GOVERNANCE  
INDONESIA • MALAYSIA • THE PHILIPPINES • INDONESIA-GERMANY

BirdLife  
www.myforestwatch.com.my



**40**  
**PAX JOINED  
THE PROGRAM**

**1/2**  
**DAY  
PROGRAM**





# ULU MUDA-TELUK AIR TAWAR IBA SITE DISCUSSION WITH KATS



**OBJECTIVE :**

To inform KATS on the TAT status and what is their response to the issue of aquaculture ponds in the mangrove reserve

# ULU MUDA EXPEDITION



OBJECTIVE :  
Assessment of wildlife and microbiota diversity using molecular approach at Ulu Muda Forestve

**6**

**PAX JOINED  
THE PROGRAM**

**7D6N**

**PROGRAM**





# JUNIOR RIVER SCIENTIST WITH FUN HOME JUNIOR @NEC



**36**

**PAX JOINED  
THE PROGRAM**

**1/2**

**DAY  
EVENT**



# MNS ATTENDED "JAWATANKUASA TEKNIKAL MENGENAI PENYELIDIKAN DAN PEMBANGUNAN (JTRD) PROGRAM PENANAMAN BAKAU DAN SPESIES SESUAI DI PERSISIRAN PANTAI NEGARA 3/2019"

**DARI PAYA KE PASAR RAYA : KAJIAN BUAH BEREMBANG**

**BEREMBANG**  
 Nama sainsnya : *Scolecophagus bailloni*, jenis di  
 dalam keluarga : Lepidoptera (Lepidoptera) dan  
 spesiesnya : *Scolecophagus bailloni* (Lepidoptera)  
 dalam keluarga : Lepidoptera (Lepidoptera)

**PENGEMALAN**  
 Jika berembang adalah dapat terbang pada jarak yang sangat  
 jauh. Biasanya dia akan dibantu dengan alat yang sangat  
 canggih dan kompleks yang ada di tubuhnya. Untuk itu dia  
 memiliki alat yang sangat canggih.

**REGUANA**  
 Berembang adalah jenis lebah yang sangat kecil dan  
 lemah. Biasanya dia akan dibantu dengan alat yang sangat  
 canggih dan kompleks yang ada di tubuhnya. Untuk itu dia  
 memiliki alat yang sangat canggih.

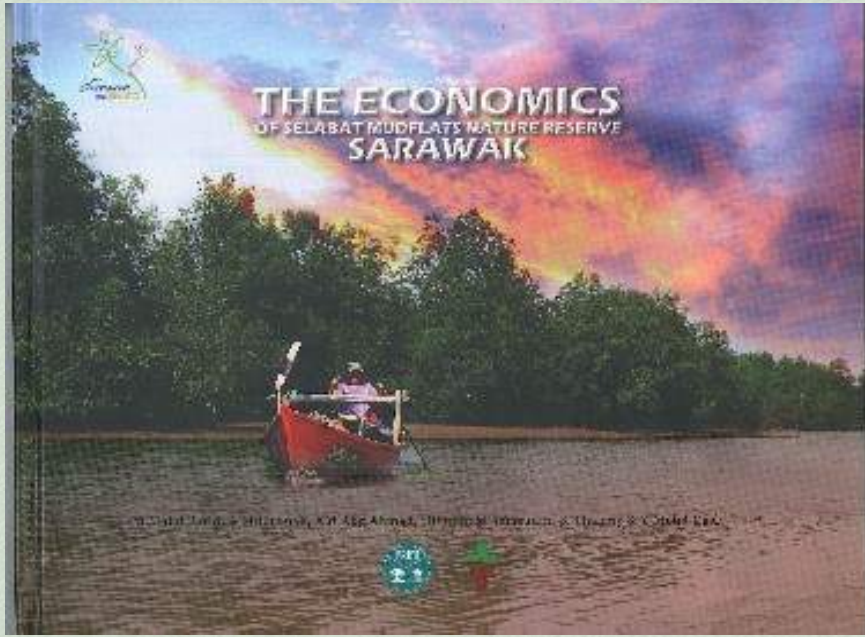
**NAMUNNYA KAJIAN BUAH BEREMBANG BERTAMBAH BERKUALITI DAN BERKUALITI**

**JUS BUAH SEGAR DINIUNDA**  
**JUS Laris**

Untuk menambah kelezatan dan rasa  
 manisnya Jus Laris, kami telah menambah  
 kandungan Jus Laris dengan kandungan  
 Vitamin C dan Vitamin E yang sangat  
 baik untuk kesehatan.

Nutritional Facts	
Per 100ml	
Energy	100kcal
Total Fat	0g
Total Carbohydrate	25g
Total Protein	0g
Total Sugar	25g
Total Fat	0g
Total Protein	0g
Total Sugar	25g

**Dititipkan oleh:**  
 MNS & NMS





November 29



# ECOCARE VOLUNTEER EDUCATIONAL TRIP TO KUCHING



**15**

**PAX JOINED  
THE PROGRAM**

**3D2N**

**PROGRAM**

November 30



# UNIVERSITI MALAYA STUDENT MANGROVE TREE PLANTING @PULAU KETAM



**9**

**PAX JOINED  
THE PROGRAM**

**50**

**MANGROVE TREE  
PLANTED**





# MNS FIREFLY WALK WITH MNS SELANGOR BRANCH NATURE GUIDE GROUP.



**30**

**PAX JOINED  
THE PROGRAM**

# 12

# DECEMBER

## **LIST OF ACRONYMS**

- KSNP** - Kuala Selangor Nature Park
- NEC** - MNS Nature Education Centre , FRIM, Kepong
- ECOCARE** - MNS Education Centre In Kertih
- SRR** - Sahabat Raja Rimba ( MNS Local Community)
- UEEH** - MNS Urban Environmental Education Hub, Midvalley
- KPA** - Kelab Pencinta Alam





# Q-DEES KINDERGARTEN MANGROVE SEEDLING PROGRAM @ECOCARE



**31**

**PAX JOINED  
THE PROGRAM**

**41**

**MANGROVE  
SEEDS PLANTED  
INTO POLYBAGS**



**MUDBALL WORKSHOP  
PETRONAS CHEMICALS  
MTBE SDN BHD  
@ SUNGAI BALOK,  
KUANTAN**



**100**  
**PAX JOINED  
THE PROGRAM**

**200**  
**MUDBALLS THROWN  
INTO RIVER**





# **MNS ATTENDED STAKEHOLDERS DIALOGUE ON THE 12TH MALAYSIAN PLAN: WATER SECTOR TRANSFORMATION**

**ORGANIZED BY KATS**



# ULU MUDA EXPEDITION



OBJECTIVE :  
Bio geography, Systematic and Parasite study of Small Mammals in Peninsular Malaysia.

**5**  
**PAX JOINED  
THE PROGRAM**

**10D9N**  
**PROGRAM**





# WARMING PLANET CAMP @NEC



**18**

**PAX JOINED  
THE PROGRAM**

**3D2N**

**PROGRAM**



# OCBC BANK MANGROVE TREE PLANTING @KSNP



**100**  
PAX JOINED  
THE PROGRAM

**500**  
MANGROVE TREES  
PLANTED



**1/2**  
DAY  
PROGRAM





# DIGITAL PHOTOGRAPHY WORKSHOP @NEC



**1/2**  
DAY  
PROGRAM

**25**  
PAX JOINED  
THE PROGRAM



# NIGHT WALK PROGRAM @NEC



**25**

**PAX JOINED  
THE PROGRAM**

**3**

**HOURS  
WALK**





# ECO BRICK WORKSHOP @ UEEH



**9**  
**PAX JOINED  
THE PROGRAM**

**1/2**  
**DAY  
PROGRAM**

December 17 - 18



# RIVER SCIENTIST WITH SRI GROWELL KINDERGARTEN @ NEC



**57**

**PAX JOINED  
THE PROGRAM**



**2**

**DAYS  
PROGRAM**





# **MNS ATTENDED MEETING WITH KG SG LIMA COMMUNITY AND SELANGOR STATE EXCO @ PULAU KETAM**





# **SUNGAI BULOH DOWNSTREAM BOAT SURVEY FOR RIVER BUFFER ZONE**







# MYBUNGA TALK @ UEEH





## **DAY TRIP PROGRAM TO PULAU KETAM**

**20**

**MANGROVE TREES  
PLANTED**



**1/2**

**DAY  
PROGRAM**





**MNS ATTENDED  
STAKEHOLDER DISCUSSION SESSION FOR:  
PENYEDIAAN PELAN PENGURUSAN  
LEMBANGAN SUNGAI BERSEPADU (IRBM)  
SUNGAI BULOH, WILAYAH PERSEKUTUAN  
KUALA LUMPUR/SELANGOR**





# STUDENT TRAINING @PULAU KETAM



## -OBJECTIVES:

1. To teach operation of the machine and steps of the plastic merchandise making.
2. Briefing about the wages and the execution matter.



# KOLEJ KOMUNITI TANJONG KARANG MANGROVE TREE PLANTING @KSNP

December 31



**40**

**PAX JOINED  
THE PROGRAM**

**45**

**MANGROVE TREES  
PLANTED**

**120**

**MANGROVE  
SEEDS PLANTED  
INTO POLYBAGS**

# CSR PAGE

## OUR CSR PROGRAMS :

- **Mangrove Tree Planting**
- **Beach Clean Up & Mangrove Seed Harvesting**
- **Nursery Works**
- **Firefly Conservation**
- **Local Community and Orang Asli Program**
- **Tapir , Sunbear, & Hornbill Volunteer Program**
- **and many more.**

For more information about our CSR programs, you can reach out to  
-Marketing & Partnerships Unit  
email : [partnerships@mns.org.my](mailto:partnerships@mns.org.my)  
tel : 03-2287 9422 ext 16






**THANK YOU**  
**FOR YOUR SUPPORT**



**Without you, MNS is not be able to reach this height. MNS Members and Corporates play important roles for MNS to strive further in protecting our rich flora and fauna landscape.**

**~ A Special THANK YOU  
to  
MNS MEMBERS  
&  
CORPORATES ~**



**Join us now:**

**Membership Officer**  
**membership@mns.org.my**  
**Tel: 03-2287 9422**  
**Fax: 03-2287 8773**  
**or sign up online at**  
**www.mns.my**

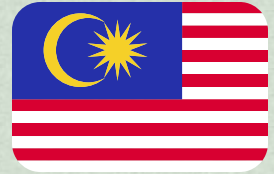
**For less than RM 5 a  
month you can lend  
your voice to conser-  
vation by becoming  
an MNS member!**



**Malaysian Nature Society**

**www.mns.my**





## **Malaysian Nature Society (MNS)**

JKR 641 Jalan Kelantan, Bukit Persekutuan, 50480 Kuala Lumpur

Tel: + 6 03 2287 9422 Fax: + 6 03 2287 8773

**[www.mns.my](http://www.mns.my)**